



# Traxodent®

## Hemodent® Paste Retraction System

The #1 choice for hemostasis and retraction

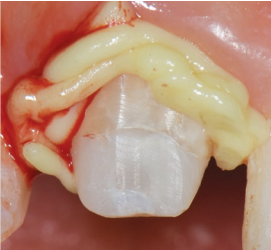
Premier's award-winning retraction paste is now available in syringe or unit dose, you choose!



## Traxodent®

Hemodent® Paste Retraction System

Photos courtesy of  
Dr. Yue Weng Cheu, DDS, FRACDS



Traxodent applied



Post-op

**“Traxodent is too good not to use ... much less stressful and far less time consuming than packing cord.”**

*- James Falk, DDS; Phoenix, AZ*

## Traxodent® is the #1 choice for hemostasis and retraction

Looking for a better solution that delivers quicker hemostasis and retraction...plus a better patient experience too?

Award-winning\* Traxodent is the #1 choice among dental professionals because it works fast, helps capture accurate impressions and rinses away easily. No film residue—no worries!

Use it alone, with cord, or a retraction cap for greater gingival deflection. And since Traxodent doesn't irritate or discolor surrounding tissue, patients leave happier too. Predictable results and reduced chair time. Every time.

✓ **Quick, effective retraction**

About 2 minutes – no fumbling with hemostatic solutions – save chair time

✓ **Superior hemostasis**

Stops bleeding and crevicular seepage while retraction occurs - easily absorbs excess crevicular fluid

✓ **Better patient experience**

Avoid tearing gingiva - less pressure on sensitive tissue

✓ **Your choice of easy application**

Sleek syringe with bendable tips, or ergonomic unit dose dispenser and capsule

✓ **Versatile**

Use Traxodent® alone, with cord or with a retraction cap for greater gingival deflection

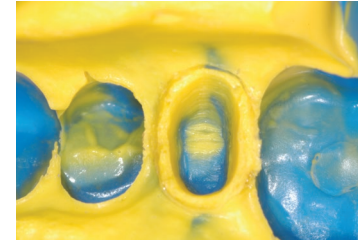
View online tutorial at [premierdentalco.com](http://premierdentalco.com)

### Crown and Bridge with Retraction Cap

Using a retraction cap with Traxodent for crown and bridge procedures simplifies moving the paste into the sulcus and provides an atraumatic method for greater retraction. The pressure from the cap quickens and assists hemostasis while the absorbent cotton cap soaks up the fluid in the sulcus. Additionally, the cap quickly brings Traxodent into close contact with the hemorrhaging tissue, which allows the astringent properties to work faster.



Syringe Traxodent and place retraction cap on prep; have patient bite down on cap for 2 minutes.



Tooth is prepared for a clean impression.

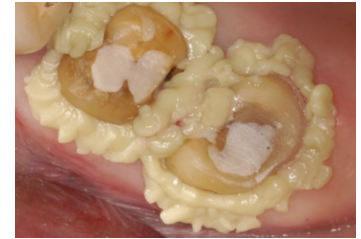
Photos courtesy of Dean Elledge, DDS, MS Wichita State University, AEGD

### Crown and Bridge with Retraction Cord

Traxodent is ideal to replace the second cord in the double cord technique. This technique saves time and lessens the discomfort to the patient while providing greater retraction. Traxodent easily rinses away, eliminating the occurrence of break-through bleeding when removing the second cord.



A single retraction cord is packed around the preps.



Place Traxodent over the cord. Wait 2 minutes.

Photos courtesy of Dean Elledge, DDS, MS Wichita State University, AEGD

### Loose Tissue

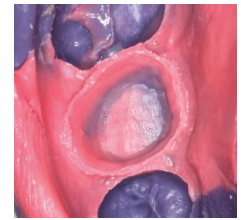
For difficult tissue that will not stay retracted, Traxodent can be used with retraction cord and cap.



Cord is placed.



Place retraction cap on prep; have patient bite down on cap for 2 minutes.



Impression with well-defined margins

Photos courtesy of William Crinzy, DDS MS

### CAD-CAM and Laser Assist Gingival Tissue Procedures

Traxodent is suitable to displace the gingiva before a CAD-CAM scan to get a crisp image without the soft tissue obscuring the view of the margin. Dentists who use lasers for retraction can benefit from Traxodent as it provides excellent post-op hemostasis after laser troughing.



Traxodent is applied around prepared tooth.



After 2 minutes, Traxodent easily rinses away.



Final CAD-CAM restoration.

Photos courtesy of Curtis E. Jansen, DDS

## Routine Hemostasis

Traxodent offers a convenient and effective way to stop and control blood and crevicular seepage for all routine hemostasis procedures. The bendable tips can be positioned for areas that are difficult to reach. It is easy to dispense at the site of bleeding and will stay put, giving the astringent properties of the aluminum chloride a chance to stop the bleeding while providing temporary shrinkage of tissue without additional tissue trauma. The absorbent clay base has an affinity towards oral fluids and blood. It will draw in fluids and easily washes away leaving a clean field behind.



Old restoration is removed then Traxodent is placed.

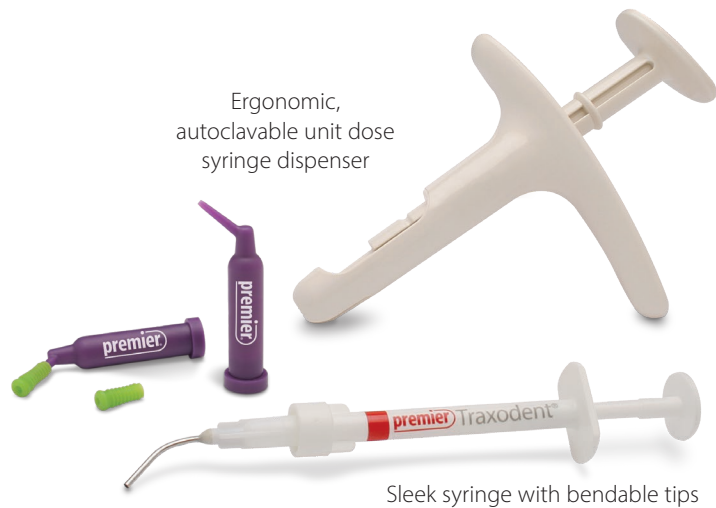


Rinse after 2 minutes. Bleeding is stopped and field is isolated.

Photos courtesy of Richard H. Nagelberg, DDS, PC

## Ordering Information

- 9007094 Traxodent Unit Dose Pack  
Contains: 24 capsules
- 9007089 Unit Dose Syringe Dispenser (3)
- 9007091 Traxodent Value Pack  
Contains: 25 syringes and 50 tips
- 9007093 Traxodent Starter Pack  
Contains: 7 syringes and 15 tips
- 9007092 Applicator Tips (50)



## Premier® Retraction Caps

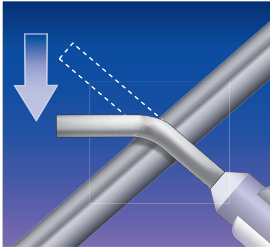
Anatomic formed cotton caps work synergistically with Traxodent to quicken and assist retraction and hemostasis.

- Easily guides Traxodent into the sulcus
- Compression assists and quickens hemostasis
- Cotton absorbs fluids
- Anatomic form allows easy placement

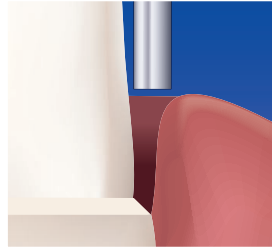


- 9048251 Size 1 - Small (120)
- 9048253 Size 3 - Medium (120)
- 9048255 Size 5 - Large (60)
- 9048260 Assorted - (15) #1, (15) #3, (30) #5

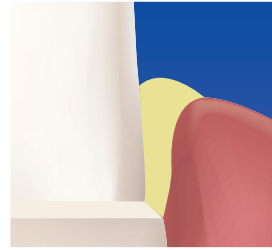
## Easy-to-use technique Patient-friendly!



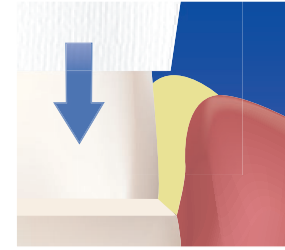
**1** Bend tip for optimal access.



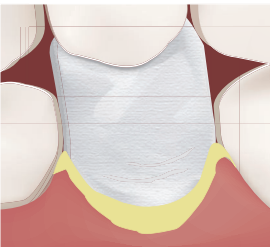
**2** Position tip parallel to axial plane of the tooth.



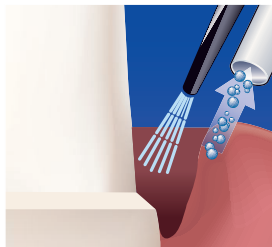
**3** Dispense sufficient material to displace tissue.



**4** Place Premier® Retraction Cap on tooth structure.



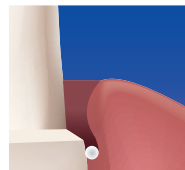
**5** Have the patient bite and maintain pressure on the cap. Wait 2 minutes.



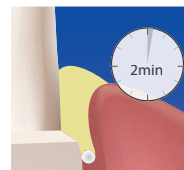
**6** Rinse away, leaving sulcus open and accessible.

### Optional Cord Technique

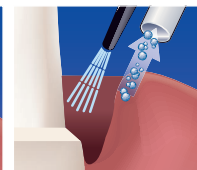
Traxodent eliminates the need for a second cord.



Place a single strand of retraction cord.



Dispense sufficient material to displace tissue. Wait about 2 minutes.



Rinse away, leaving sulcus open and accessible.

**“I can’t work without it. The product works better than others of this type and will be kept on-hand in my office daily.”**

*-Jeff Kosoris, DDS; MS Waxahachie, TX*

**“When we speak of products that are game-changers, Traxodent is a must-have in anyone’s restorative arsenal.”**

*- Ron Kaminer, DDS; Hewlett, NY*

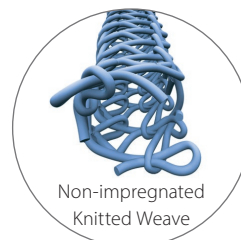
## Knit-Pak™

### Knitted Retraction Cord

Use in combination with Hemodent® or Traxodent® for tissue displacement and hemostasis

- Carries an abundant quantity of hemostatic solution
- Compacts under pressure, making it easier to pack
- Will cut clean and not get entangled in a bur
- Available in 6 color coded sizes, 100% cotton

Each Knit-Pak contains 100 inches (254 cm) of cord.



Non-impregnated  
Knitted Weave

	Size	Color
9007551	000	Green
9007552	00	Brown
9007553	0	Purple
9007554	1	Blue
9007555	2	Orange
9007556	3	Yellow



A stainless steel cutting blade inside the cap automatically cuts the cord upon closing.



The cord piece is held by the cap until removed, preventing it from dropping. Protects cord piece and container from cross-contamination.

For more information on these and additional products, call 610-239-6000.

Order through your authorized dealer.

Please contact your dealer concerning product availability in your country.

**premier®** Inspired solutions  
for daily dentistry®



[premierdentalco.com/promise](http://premierdentalco.com/promise)

Premier® Dental Products Company • 1710 Romano Drive, Plymouth Meeting, PA 19462, USA  
Phone 888-670-6100 • 610-239-6000 • Fax 610-239-6171 • [premierdentalco.com](http://premierdentalco.com) • [info@premierdentalco.com](mailto:info@premierdentalco.com)

1. SDM Northcoast, North America 2020.

8610410 0820020 Rev15 PDF